



Science.
Applied to Life.™



Confidence for you.
Comfort for your patient.

Clinpro™
Glycine Prophy Powder



Comfortable cleaning for your patients.

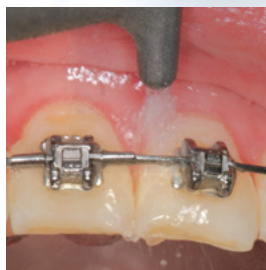
You take special care with your preventive measures to ensure your patients' comfort and continued oral health. Now there's a way to enhance your prophylaxis procedure and advance their care.

Clinpro™ Glycine Prophylaxis Powder from 3M is a gentle prophylaxis powder that has the longest clinical history of glycine air-polishing powders—used clinically since 2001.

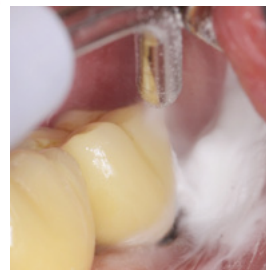
Clinpro™ Glycine Prophylaxis Powder

Benefits for you and for your patients:

- For supra- and subgingival plaque biofilm removal
- Low abrasiveness on dentin, root surfaces and restorations
- Proven to effectively remove biofilm in periodontal pockets
- Removes light to moderate extrinsic stains
- Gentle on restorations, orthodontic brackets, implants and sealants
- Fast and easy procedure
- Pleasant tasting
- Can be used in commercially available air-polishing equipment
- Effective for areas difficult to reach with paste



Around orthodontic brackets

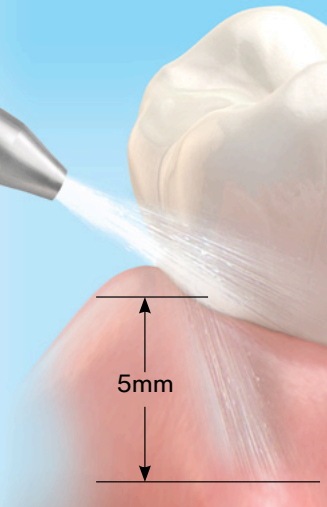


On implants and restorations



Around gingival margins

Subgingival plaque biofilm removal by spraying Clinpro™ Glycine Prophylaxis Powder along the gingival margin with a 30° to 60° angle in a steady motion to facilitate subgingival cleaning up to 5mm pocket depth.



Unlike conventional air-polishing powders such as sodium bicarbonate, Clinpro glycine prophylaxis powder is made with soft and gentle water-soluble glycine technology, for a thorough but gentle cleaning—even subgingivally. That means:

- A fast and comfortable cleaning for your patients and confidence for you
- Safe removal of biofilm from soft root surfaces, dental restorations, implants and around orthodontic brackets
- Gentler on dental tissues than conventional procedures using currettes and scalers

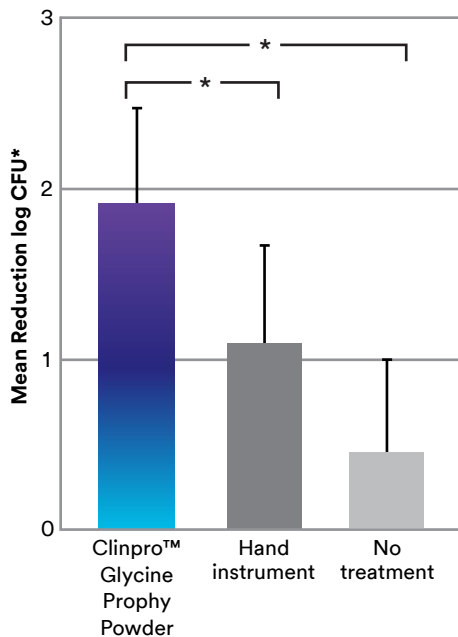
Fast and effective biofilm removal for you.

Clinpro™ Glycine Prophy Powder is indicated for the removal of biofilm on supra- and subgingival tooth surfaces—during routine professional tooth cleaning and for supportive maintenance in periodontitis and peri-implant disease therapy.

The gentle air-polishing procedure with Clinpro glycine prophy powder results in a decrease in pocket depth, and is clinically proven to remove biofilm in 3–5mm periodontal pockets as effectively as hand instruments.

Proof it works

Reduction of Bacteria (n = 23 Patients)



More Gentle, Less Abrasive on Dental Surfaces

Treatment Type	Dentin Surface		Composite Surface	
	Before	After	Before	After
Clinpro™ Glycine Prophy Powder				
Curette				
Ultrasonic Scaler				
Sodium Bicarbonate Powder <small>(Sodium bicarbonate is not indicated for subgingival use)</small>				

Microscopic images showing surface before and after treatment (SEM 500x magnification)

Leading the way in preventive dentistry

With proven, innovative products, 3M supports your prophylaxis procedure from start to finish—helping you provide the ultimate in patient comfort and care.



For gentle supra- and subgingival cleaning

	Clinpro™ Glycine Propyl Powder	Conventional Sodium Bicarbonate Powders	Conventional Propyl Paste
Used to remove subgingival plaque biofilm up to 5mm pocket depth	X		
Used to remove supragingival plaque biofilm	X	X	X
Made with less abrasive glycine technology	X		
Safe on restorations, implants, orthodontic brackets and sealants	X		X
Water-soluble	X	X	X
Pleasant, non-salty taste	X		X
Can be used for patients with sodium restrictions	X		X
Removes light to moderate extrinsic stains	X	X	X
Removes heavy discoloration		X	
Used for supportive maintenance in periodontitis therapy	X		
Used for supportive maintenance for peri-implant therapy	X		



Ordering Information

Item #	Product Information
67008	Clinpro™ Glycine Propyl Powder: 2 bottles – 5.6 oz/160 grams each
12616	C&P Powder: 10 oz bottle

Clinpro™ prophylaxis solutions help your patients, and you, achieve success.
Make 3M in-office and at-home preventive products part of your patient care protocol.

www.3M.com/PropylPowder



3M Oral Care
2510 Conway Avenue
St. Paul, MN 55144-1000 USA
Phone 1-800-634-2249
Web 3M.com/dental

3M Canada
Post Office Box 5757
London, Ontario N6A 4T1
Canada
Phone 1-888-363-3685

3M, ESPE and Clinpro are trademarks of 3M or 3M Deutschland GmbH. Used under license in Canada. Printed in USA. © 3M 2016. All rights reserved. 70-2013-0760-3